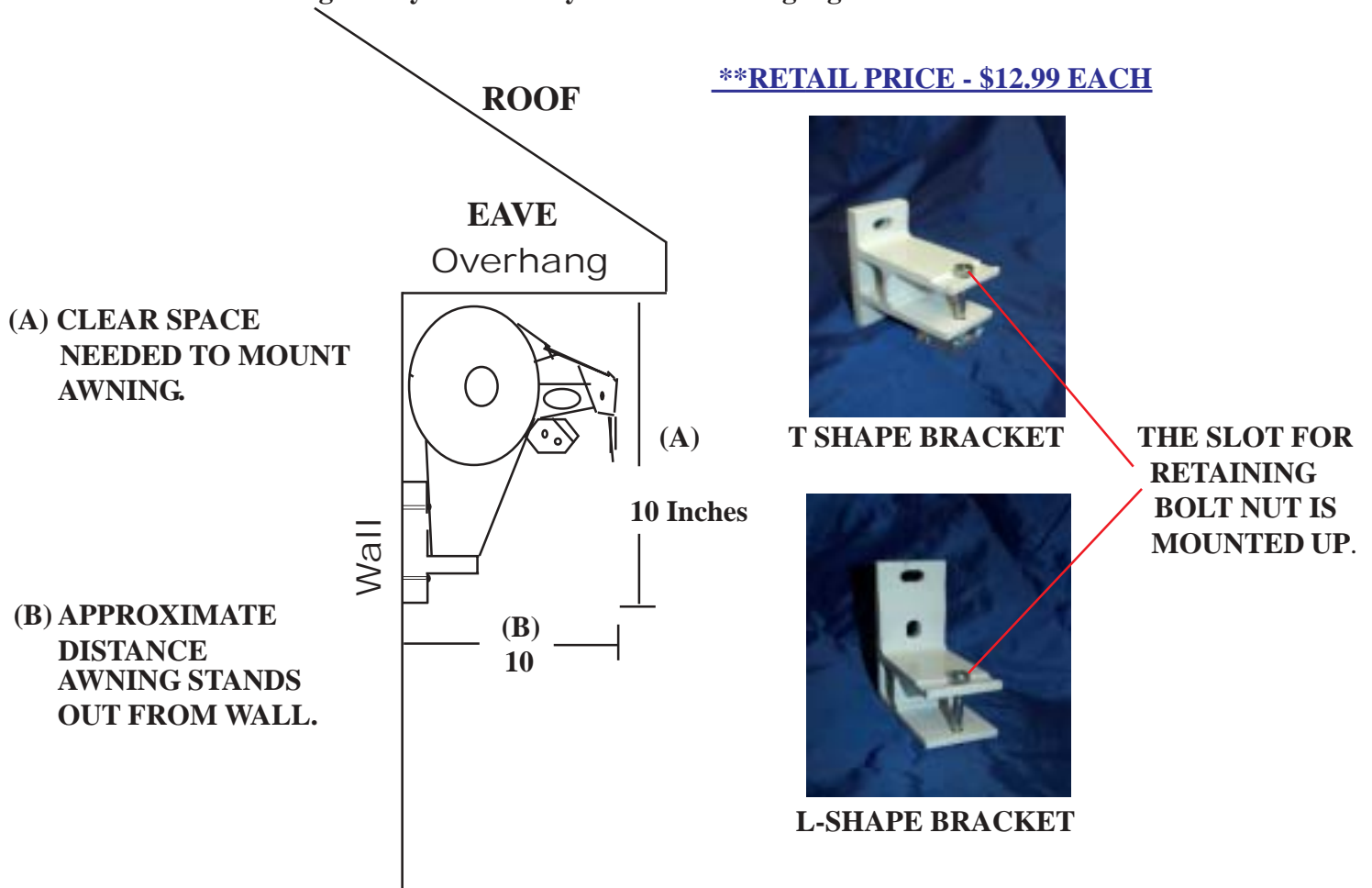


King Canopy Awning Wall Mounting Brackets

King Canopy awnings are shipped with wall mounting brackets only. Under eave and roof mount brackets are available as an optional purchase. See enclosed information.

(DIAGRAM BELOW IS NOT TO SCALE)

The illustration below shows an awning mounted on the wall under an eave of a structure. It illustrates that 10 inches will be needed for this application. These mounts may be used to secure an awning on any structurally sound wall using lag bolts.



King Canopy Awnings come standard with wall mounting brackets. Brackets come in two shapes. (See Pictures Above) The awning could be packed with either of the brackets. One is T-Shape with one mounting hole on top and one on bottom. The L-Shape has both mounting holes on top. Both brackets function the same. When measuring for clear space, using either bracket, always measure from bottom of bracket. (See (A) in diagram)

**Amount of brackets shipped with awnings and recommended for mounting:

12', 14', 16' = 4 Wall Mount Brackets with lag bolts

18' = 5 Wall Mount Brackets with lag bolts

UNIVERSAL EAVE MOUNT BRACKET

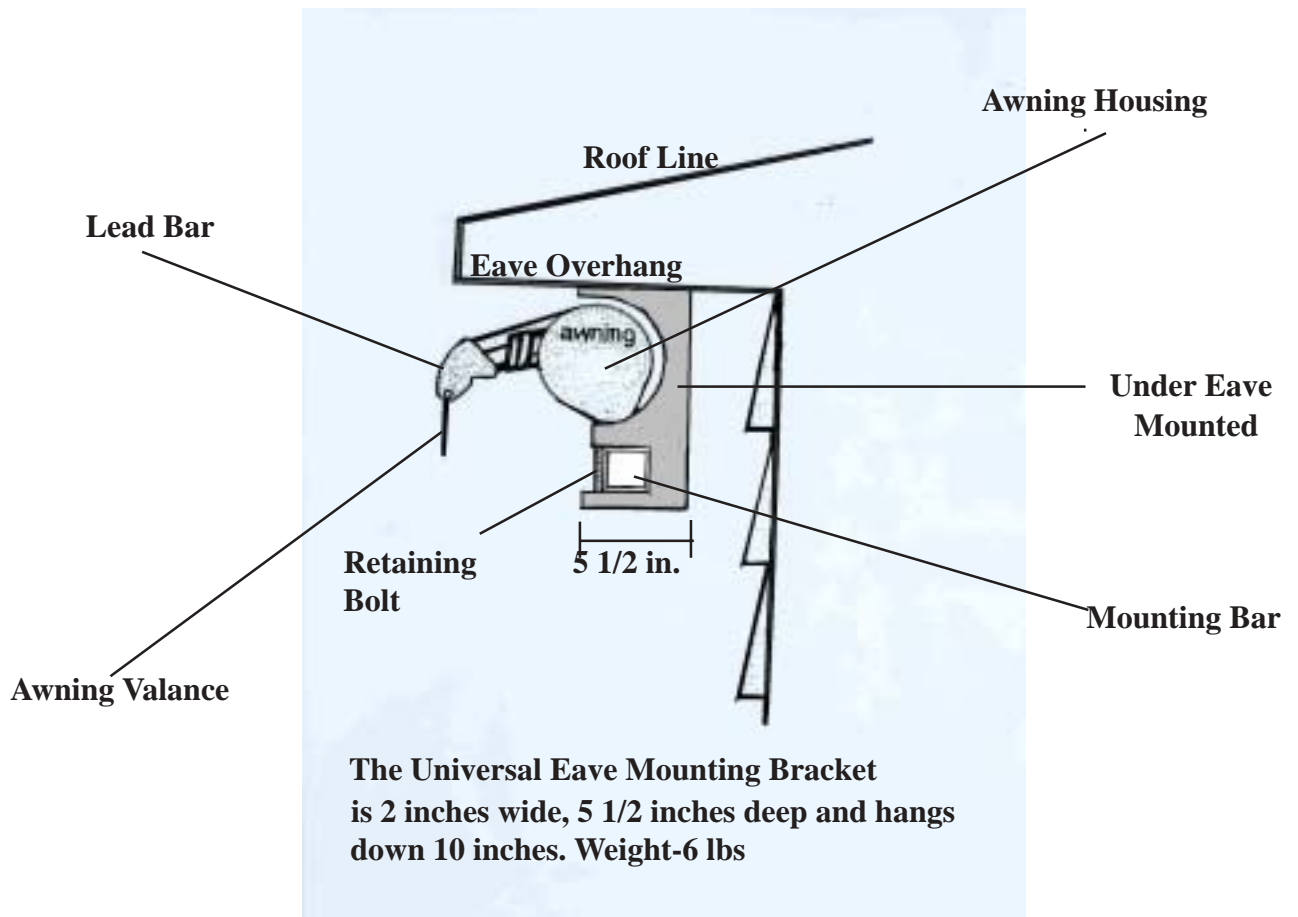
Eave brackets are an optional purchase. They are not supplied with awnings. Awnings are shipped with wall mount bracket only.

The universal eave mount bracket is used to mount under an overhang as shown in diagram below. It can also be mounted on the wall. When using this bracket keep in mind clearance for doors that open out. Make sure your eave is structurally sound to handle awning weight.

**RETAIL PRICE - \$29.95 EACH



Universal Eave Mount Bracket



Note: This is an optional bracket not included with awnings.

****RECOMMENDED AMOUNT NEEDED FOR PROPER INSTALLATION:**

12', 14', 16' = 4 Brackets

18' = 5 Brackets

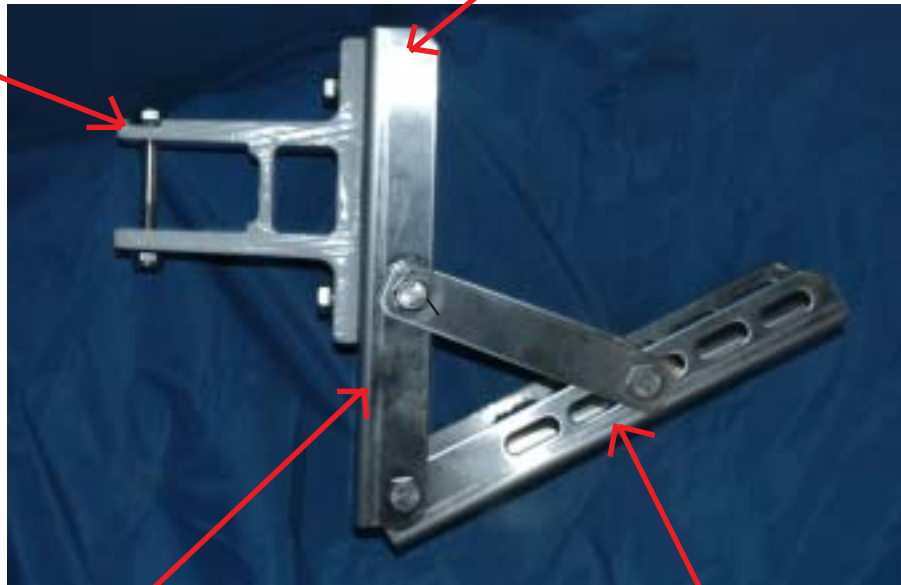
Awning Roof Mounting Brackets

The roof mount bracket is an optional purchase. They are not supplied with awnings. Awnings are shipped with wall mount brackets only.

The roof mounting bracket can be used when wall or under eave mounting is not possible. The mount is constructed of all stainless steel components. Powell and Powell Supply distributes these brackets only and is not the manufacturer or is not affiliated with manufacturer. Powell and Powell Supply strongly recommends professional installation when using roof mount brackets.

****RETAIL PRICE - \$149.00 EACH**

Uses the standard wall bracket shipped with awnings.



All stainless steel construction with stainless steel bolts and nuts.

Vertical mounting surface for awning bracket.
3 inches wide x 9 inches high.

Adjustable roof mounting plate.
Adjusts from 10 degrees to 90 degrees.
Surface area 3 inches wide x 9 inches long.

NOTE: Material and hardware for mounting to the roof are not supplied. We recommend you consult with a professional installer or building contractor for proper installation.

****RECOMMENDED AMOUNT NEEDED FOR PROPER INSTALLATION:**

12', 14', 16 = 4 Brackets

18' = 5 Brackets